

November 11, 2019 | Research | No comments

Building an artificial kidney from human stem cells

Many diseases and drugs affect kidney function by damaging the glomeruli — the major site of blood filtration and a target for many diseases. An *in vitro* model of the human glomerulus could facilitate therapeutic discovery and illuminate kidney disease mechanisms. Efforts to develop such models have been limited by the lack of a reliable source of functional human podocytes, the specialized epithelial cells that regulate selective permeability in the kidney glomerulus. Despite recent advances in generating nephron progenitors and multicellular organoid structures, a method for the differentiation of human induced pluripotent stem (hiPS) cells into functional podocytes with specificity and efficiency remains elusive.

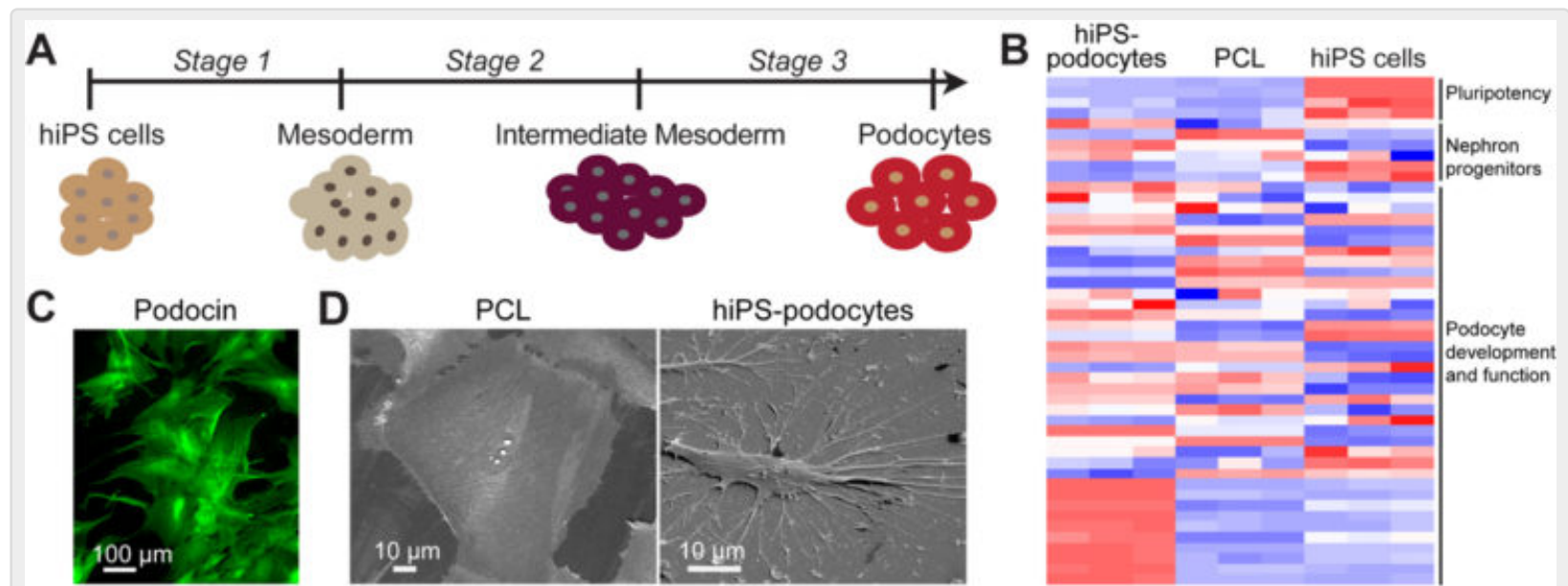


Fig. 1. Directed differentiation of human iPS cells into mature kidney cells. (A) Schematic illustration of the method for human iPS cell differentiation into kidney glomerular podocytes. (B) Transcriptome analysis of genes involved in different stages of kidney development. Red, up-regulated; Blue, down-regulated. (C) Immunofluorescence staining showing the expression of podocin (green), a podocyte lineage identification marker, in the human iPS cell-derived kidney cells. (D) Scanning electron micrographs of human iPS cell-derived kidney podocytes compared to an established human podocyte cell line (PCL) which lacks morphological features necessary for kidney function.

To address these challenges, we developed a highly efficient method for directed differentiation of hiPS cells into functional kidney glomerular podocytes which was enabled by the discovery of key signaling molecules that support adhesion and stimulate gene regulatory pathways in human kidney development. The resulting hiPS cell-derived podocytes express markers consistent with mature phenotype, exhibit primary and secondary foot processes, and integrate into forming glomerular structures when injected into mouse embryonic kidney explants.

We leveraged the hiPS cell-derived podocytes and organs-on-chips technology to engineer an *in vitro* model of a functional human kidney glomerular capillary wall. Unlike previously reported kidney organoids that lack fluid path or circuitry and have limited control over tissue structure and function, we found that our human glomerulus-on-a-chip supports podocyte differentiation and recapitulates the tissue-tissue interface (podocytes—basement membrane—endothelium) and selective molecular filtration function of the glomerulus. Our results demonstrate the feasibility of generating mature podocytes from unspecialized stem cells in a robust manner, providing a unique opportunity to engineer a functional human kidney glomerulus-on-a-chip. These results could facilitate investigations that aim to uncover the molecular and cellular mechanisms of human kidney development, function, and disease progression.

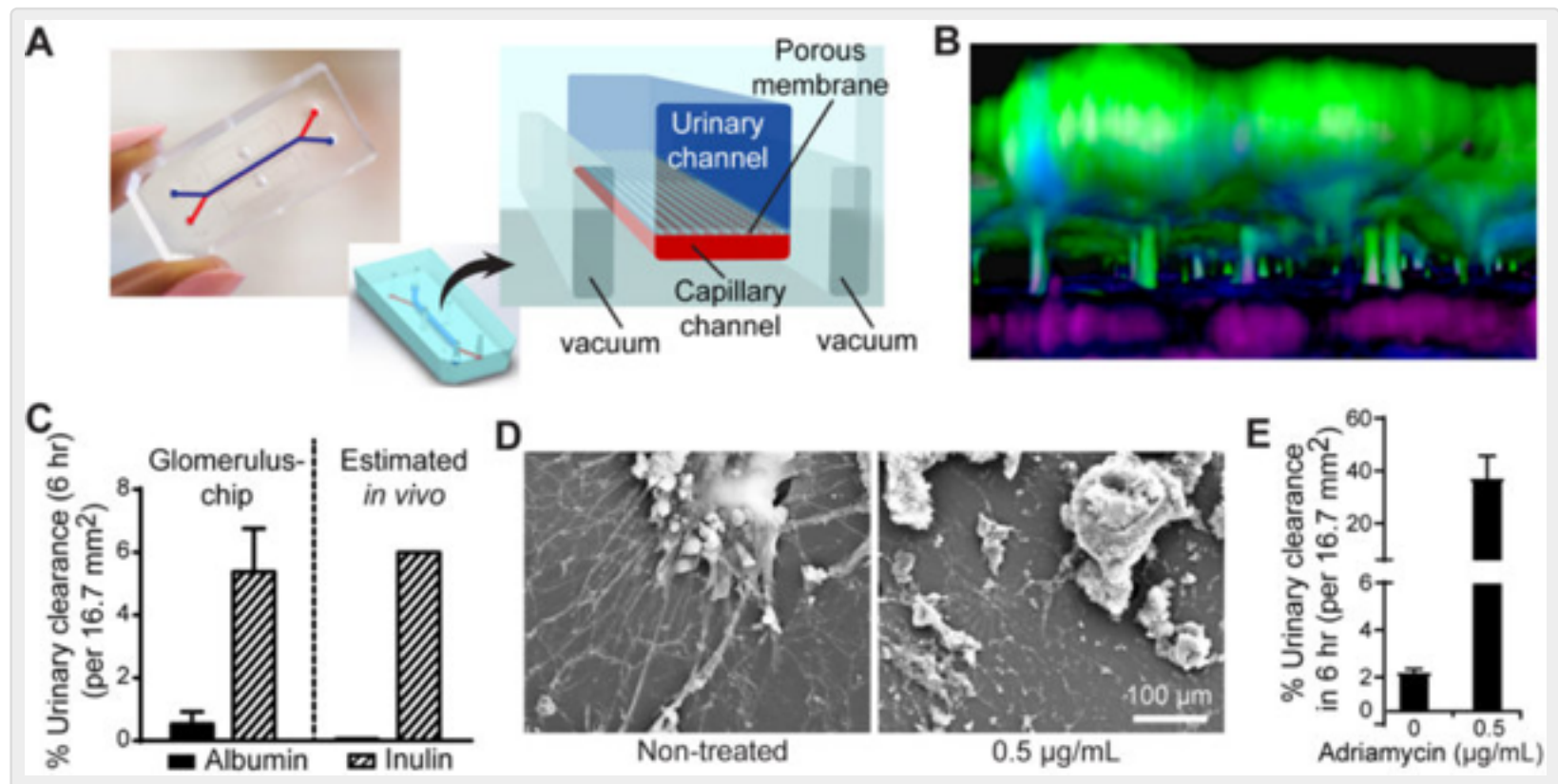


Fig. 2. Establishment of a functional human kidney glomerulus-on-a-chip. (A) Microfluidic organ-on-a-chip device showing dedicated compartments to mimic the vasculature (capillary channel) and podocyte layer (urinary channel). (B) 3D reconstruction of the human kidney's blood filtration barrier modeled using iPS cell-derived podocytes (green) and primary glomerular endothelium (magenta). (C) Selective filtration of molecules in the engineered glomerulus-on-a-chip compared to an estimated *in vivo* values. (D) Modeling podocyte injury induced by the chemotherapy drug Adriamycin. Scanning electron micrographs showing damage to podocytes exposed to clinically relevant concentration of the drug. (E) Glomerulus-on-a-chip models adriamycin-induced albuminuria. Bar graphs represent the concentration of albumin in the urinary compartment or loss of albumin protein into urine, a hallmark of kidney disease.

These results also provide a low-cost alternative to animal models for nephrotoxicity testing, drug screening, and the development of novel therapeutic strategies for both genetic and acquired forms of human kidney diseases. Given that specialized podocytes in a fully formed human kidney are post-mitotic and unable to undergo regenerative proliferation to compensate for cell loss or an increase in glomerular basement membrane surface area *in vivo*, our results also provide opportunities for cell-based therapy and regenerative medicine approaches for kidney disease, including chronic kidney disease and podocytopathies.

Samira Musah

Department of Biomedical Engineering, Pratt School of Engineering, Duke University, Durham, NC, USA
Department of Medicine, Division of Nephrology, Duke University School of Medicine, Durham, NC, USA

Publications

Directed differentiation of human induced pluripotent stem cells into mature kidney podocytes and establishment of a Glomerulus Chip.

Samira Musah, Nikolaos Dimitrakakis, Diogo M. Camacho, George M. Church, Donald E. Ingber
Nat Protoc. 2018 Jul


Mature induced-pluripotent-stem-cell-derived human podocytes reconstitute kidney glomerular-capillary-wall function on a chip.


Musah S, Mammoto A, Ferrante TC, Jeanty SSF, Hirano-Kobayashi M, Mammoto T, Roberts K, Chung S, Novak R, Ingram M, Fatanat-Didar T, Koshy S, Weaver JC, Church GM, Ingber DE
Nat Biomed Eng. 2017

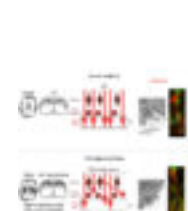
Read offline:

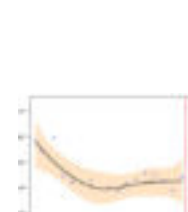



Related Articles:


- 

How can you tell that stem cells are good at math?... Blood production is an essential process in all vertebrate animals that needs to occur throughout an organism's lifespan; red blood cells need to carry oxygen to distant tissues, platelets are...
- 

Be careful of podocyte B7-1 Chronic kidney disease (CKD) is a huge global health burden. If not treated promptly, CKD can progress to end-stage renal disease, meaning that kidney function is at below 10% of...
- 

EML1: an entry point to study cellular mechanisms at... Cerebral cortical development is a tightly regulated process, depending on dividing progenitor cells that ultimately produce neurons that then migrate to find their appropriate positions in the developing cortex. Certain...
- 

Kidney function decline in polycystic kidney disease... Autosomal dominant polycystic kidney disease (ADPKD) is a relatively common (estimated to affect 1 in 1000 to 1 in 4000 persons all over the world) inherited disorder that leads to...
- 

Villi-like topography provides a native... The use of an organotypic culture system, as an alternative to animal models, for recapitulating physiological and biologically relevant intestinal tissue is constantly gaining success in various fields of science....
- 

Biomimetic approach for an artificial nose The dream of monitoring odours is certainly very old, but only recently scientists have come-up with realistic approaches and proposals. As soon as the olfactory system started to reveal its...

artificial organs, disease models, kidney, kidney disease, stem cell, stem cells

Leave a Reply

You must be [logged in](#) to post a comment.

TOP KEYWORDS

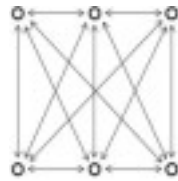
Diabetes | Alzheimer's disease
Cancer | Breast cancer | Tumor
Blood pressure | Heart
Brain | Kidney | Liver | Lung
Stress | Pain | Therapy
Infection | Inflammation | Injury
DNA | RNA | Receptor | Nanoparticles
Bacteria | Virus | Plant

See more ...

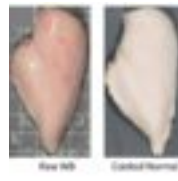
Popular



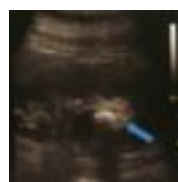
How does homework affect students?
June 11, 2019



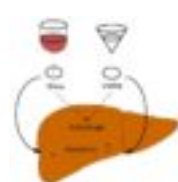
Comparison of biological and cultural evolution
January 7, 2016



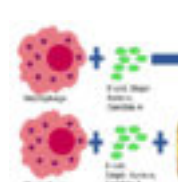
The woody breast condition affects texture characteristics of both raw and cooked chicken breast meat
April 11, 2017



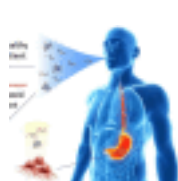
A stone during pregnancy – more painful than childbirth
September 18, 2017



Vodka and wine consumption: good for your liver?
January 12, 2017



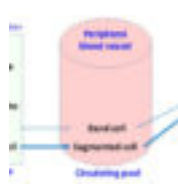
Apple cider vinegar can help clear bacteria and yeast infections; a natural cure
March 12, 2019



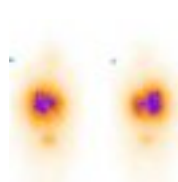
Finding aroma clues in the human breath to diagnose diseases
February 29, 2016



Morgellons disease: the search for a perpetrator
January 18, 2016



Bacterial infection can be diagnosed and the severity evaluated using WBC count and left shift
October 31, 2016





Lutetium-177 radioisotope targeted therapy for treatment of cancer and other diseases
February 12, 2016

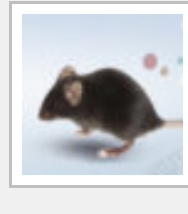
Next »




TOOLS & METHODS

- 

Proofread or Perish: Editing your scientific writing for successful publication
Perhaps the consequences of neglecting to proofread and edit scientific **Read More »**
- 

Lab Leader makes software applications for experiment design in life science
Pick your target molecules and the application will generate a **Read More »**
- 

Cyagen Biosciences – Helping you choose the right animal model for your research
While many animal models are available “ off the shelf **Read More**
- 


LabCollector LIMS and ELN for improving productivity in the lab
Lab management is difficult. There are many diverse tasks including: **Read More »**
- 

Image Cytometer – NucleoCounter® NC-3000™
The NucleoCounter® NC-3000™ is an advanced image cytometer utilizing fluorescence **Read More »**

RECENT POSTS

- Microalgae-based wastewater treatment for nutrients recovery
- EML1: an entry point to study cellular mechanisms at the origin of brain malformations
- A novel measure for predicting OSA whilst awake
- Experiences of other identities and Dissociative Identity Disorders in the continuum of Non-Ordinary Mental Expressions
- Nanomaterials as promising alternative in the infection treatment

TAGS

alcohol alzheimer's disease
bacteria blood bone
brain breast cancer
cancer cell children
conference diabetes
disease DNA drug
drugs evolution food gene
health heart infection
inflammation kidney liver lung
mitochondria model nanoparticles
obesity pain patient patients
plant protein receptor RNA
stem cells stress surgery
symposium therapy
treatment tumor virus

FOLLOW US



CALENDAR

MAY 2021						
M	T	W	T	F	S	S
					1	2
3	4	5	6	7	8	9
10	11	12	13	14	15	16
17	18	19	20	21	22	23
24	25	26	27	28	29	30
31						
« Apr						